

Solid Feeder

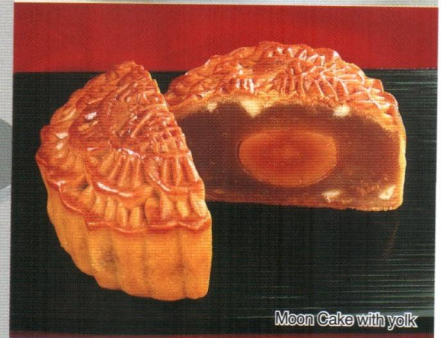
for KN551 / KN550 / KN500 / KN135

- By attaching the Solid Feeder to the “Cornucopia”, it is now possible to encrust solid material in your products.
- The maximum production capacity is 30pcs/min.
- The optional “Air Suction” device eliminates air pockets in the products. (Suction can be adjusted depending on the products.)
- Power is supplied from Cornucopia main body. Some Cornucopias need to attach “option connector”.

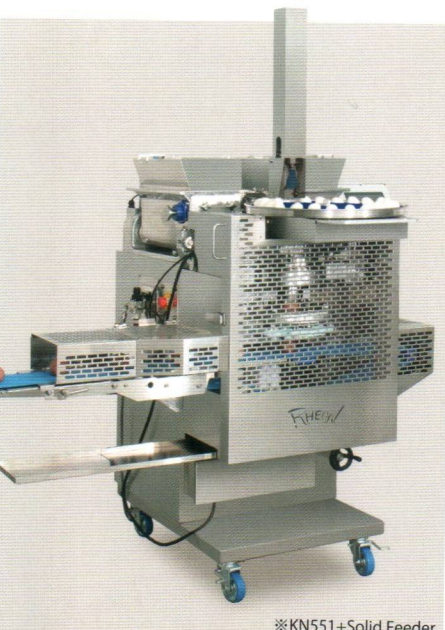
Encrust solid material into the center of product!



Scotch Egg



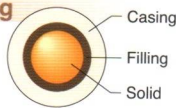
Moon Cake with yolk



※KN551+Solid Feeder

Solid Material with Filling

Encrusts solid material completely with filling.



Pie with Chestnut

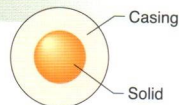


Daifukumochi with Strawberry

Single Solid Material

Encrusts solid material completely without filling.

※Special parts are required.



Marillenknödel



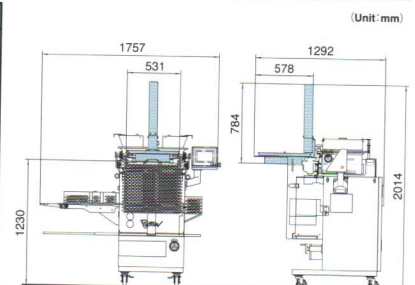
Chinese Meat Bun with Boiled Pork

Specifications

	for KN551	for KN550	for KN500	for KN135
Code	U068700	U068421	U067420	U064890
Production Capacity	30 pcs./min. (Max.)			
Solid Size	under $\phi 40$ mm		under $\phi 38$ mm	
	(depends on the size of the material)			
numbers of disk pocket	24 pcs.			
Air	50 N \bar{l} /min (max.) 0.4 Mpa (4kgf / cm 2)			
Weight	18 kg			

Dimensions

(with KN551)



The specifications are subject to change without notice and without obligation.

All Rights Reserved. Reproduction, adaptation or translation without prior written permission is prohibited.



RHEON AUTOMATIC MACHINERY CO., LTD.

Head Office: 2-3 Nozawa-machi, Utsunomiya 320-0071, Japan
Phone: 028-665-1111 Fax: 028-665-3346 E-mail: info@rheon.com
URL: http://www.rheon.com

RHEON U.S.A.

2 Doppler, Irvine, CA 92618, U.S.A.
Phone: 949-768-1900 Fax: 949-855-1991 E-mail: us.info@rheon.com
URL: http://www.rheonusa.com

RHEON U.S.A. NJ BRANCH

375 North Street, Unit K, Teterboro, NJ 07608, U.S.A.
Phone: 201-487-0600 Fax: 201-487-0610 E-mail: us.east@rheon.com

RHEON AUTOMATIC MACHINERY GmbH

Tiefenbroicher Weg 30, 40472 Düsseldorf, Germany
Phone: 0211-471950 Fax: 0211-424129 E-mail: de.info@rheon.com
URL: http://www.rheon-europe.com

RHEON AUTOMATIC MACHINERY GmbH ULM BRANCH

Saumweg 30, 89257 Illertissen, Germany
Phone: 07303-1599410 Fax: 07303-15994111 E-mail: ulm@rheon.com
RHEON AUTOMATIC MACHINERY CO., LTD. TAIWAN BRANCH
5F., No.118, Xinhu 1st Rd., Neihu District, Taipei City, Taiwan (R.O.C.)
Phone: 02-2792-3525 Fax: 02-2792-3529 E-mail: tw.info@rheon.com
RHEON AUTOMATIC MACHINERY CO., LTD. SHANGHAI OFFICE
Room 305, 5F, SIFOW 1438 Hongqiao Road, Changning District, Shanghai
Phone: 86-21-61976318 Fax: 86-21-61976380

JM COOL SOLUTIONS
1308 BODEQUETA ST., STA CRUZ NLA
TEL: 703-2318/708-6763
MOBILE: 0917-8825168